



Modula SINTESI1

Think Vertical, Think Modula

The solution for lightweight products in small spaces.

The Sintes1 is a vertical lift module (VLM) that has been tailor-made for small to medium-sized applications. It is ideal for storing and picking items such as electronic components, pharmaceuticals and tooling. Modula Sintes1 features a modern and aesthetic appearance, with a coated internal steel structure and is clad in pre-coated exterior panels for durability and protection, all of which are entirely manufactured using a state of the art production line.

Before Modula



After



**Floor Space
Recovery**



**UP
TO 90%**



1. RECOVER SPACE IN SMALL ENVIRONMENTS



2. INCREASE SECURITY OF STORED GOODS



3. SAVE TIME AND INCREASE OPERATION SPEED



4. IMPROVE ACCURACY WITH A MINIMAL INVESTMENT



5. REDUCE RISKS OF YOUR EMPLOYEES



6. BOOST INVENTORY MANAGEMENT WITH A DEDICATED SOFTWARE

THROUGHPUT OF UP TO 140 TRAYS/HOURS

TRAY ADJUSTABILITY

25mm
25mm
25mm

CERTIFICATION



PRE-COATED EXTERIOR STEEL PANELS

STEEL REINFORCED TOOTHED BELTS

TOUCH SCREEN OPERATOR CONSOLE

USER FRIENDLY SOFTWARE INTERFACE



Technical highlights

Unit heights: **from 2.600 mm to 7.100 mm**

Unit height increments on: **100 mm**

Tray storage adjustability: **25 mm**

Tray widths: **1.300 mm & 1.700**

Tray depth: **654 mm**

Maximum product heights up to: **680 mm**

Net tray payload capacity: **200 kg**

Net unit load capacity: **25.000 kg**

Gross unit load capacity: **30.000 kg**

Throughput: **up to 140 trays / hr**

Operator interface: **rugged 10,4" colour touchscreen control console**

Number of bays: **up to 2 only on ground level**

Type of bay: **internal or external with single or dual tray delivery**

Minimal energy consumption: **1,5 kW motor for vertical axis**

Automatic tray weight measurement each time a tray is returned

Dynamic storage of trays depending on the specific height

Coated steel internal frame structure

Vertical axis lifting design driven by 4 steel reinforced toothed belts

Extractor's vertical lifting system guided with 4 urethane rollers for each side of the elevator

Flexibility

The Modula Sintes1 is the ideal automated storage system for any type of goods or materials. Smaller shops as well as large distribution facilities are able to benefit from its flexibility with improved efficiency and increased throughput easily.

Copilot operator console

The Copilot is a rugged operator interface, suitable for any industrial environment. Thanks to its 10,4" colour display with touch screen technology and an easy to use Lift OS operating system, the result is an extremely user friendly experience for any operator.

Modula WMS software suite

Modula WMS is a fully featured warehouse management software that can be easily used to manage the space and utilization of Modula Sintes1 units management or as a standalone software tool. It can easily be interfaced with nearly any ERP system.

Operator safety

All Modula units are equipped with physical and optical safety barriers in order to ensure a 100% safe environment to operators. Product safety is further guaranteed by the TÜV-GS certification obtained for the entire product line.

Internal or external bay, single or dual delivery

Modula offers 4 different bay configurations.

The internal bay is the ideal solution when space is at a premium.

The external bay offers the best possible ergonomic workplace for the operators.

It can provide further benefits when used in combination with picking aids such as cranes and mechanical manipulators to lift heavy items stored within trays.

Single delivery level is ideal when the machine will be used moderately, or when the picking time is quick.

Dual delivery is the ideal configuration for a fast-paced picking operation.



SINGLE INTERNAL DELIVERY

SINGLE EXTERNAL DELIVERY

DUAL INTERNAL DELIVERY

DUAL EXTERNAL DELIVERY

Sintes1.3



Model	Tray Width (mm)	Tray Depth (mm)	Tray Wall Height (mm)	Maximum Tray Load Capacity (kg)	Unit Footprint INTERNAL BAY (Width x Depth) (mm)	Unit Footprint EXTERNAL BAY (Width x Depth) (mm)
SINTES1.3	1.300	654	31-56	200	1.650x2.376	1.650x3.101

Sintes1.7



Model	Tray Width (mm)	Tray Depth (mm)	Tray Wall Height (mm)	Maximum Tray Load Capacity (kg)	Unit Footprint INTERNAL BAY (Width x Depth) (mm)	Unit Footprint EXTERNAL BAY (Width x Depth) (mm)
SINTES1.7	1.700	654	31-56	200	2.050x2.376	2.050x3.101

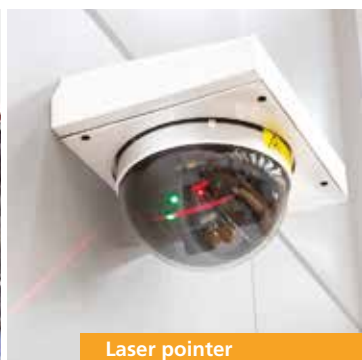
Modula Sintes1 **OPTIONS**



LED bar



Alphanumeric LED bar



Laser pointer



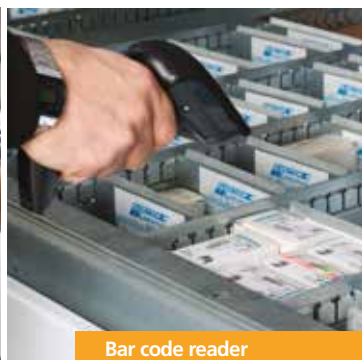
Badge reader



EKS reader



Put-to-light



Bar code reader



Piece counting scale



Label printer



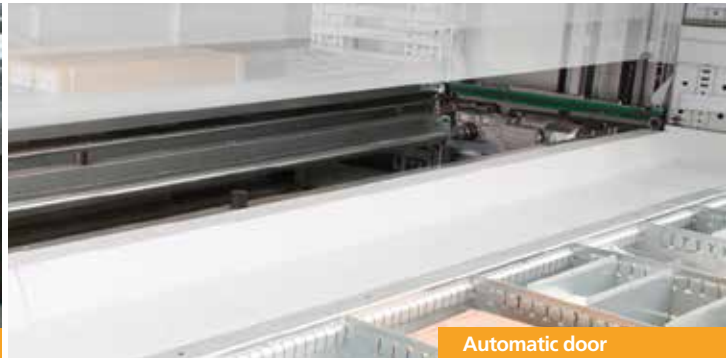
Tray accessories



Weight distribution plate



ESD protection



Automatic door



Modula Green



Cart for tray removal

Accessories

Black&Decker	USA
Colgate Palmolive Company	USA
Costan	Italy
Cristian Lay	Spain
Deny Fontaine	France
Dewalt	USA
GGB	USA
Incold	Italy
Maria Galland	Germany
Osram	Mexico/Italy
Seco Tools	France

Aeronautic

Barry Controls Aerospace	USA
Bombardier	Germany
Dassault Aviation	France
Embraer	Brazil
Eurocopter	France
Israel Aerospace Industries	Israel
JPR	France
Krasny Oktyabr	Russia
Lufthansa	China
TFI	France

Food Industry

Acetaia di Modena	Italy
Beam Global	Spain
Contri Spumanti	Italy
Damm	Spain
Marchesi Antinori	Italy
Mars	USA
Nestle	Great Britain
Pepsi Corporation	USA
Spendrups	Sweden
Vonpar Refrescos	Brazil
Yoplait (General Mills)	France

Furnishing

Alexandria Mouldings	USA
Edilkamin	Hungary
Franke	Italy
Immergas	Italy

Automotive

Automobili Lamborghini	Italy
Axletech	France
Betamotor	Italy
Brembo	Italy/Poland/China
Caterpillar	USA
Chrysler	Mexico
CNH Industrial (FIAT)	Spain/Belgium
Continental	Germany/Romania/Serbia
Daimler	Germany
Ferrari	Italy
FIAT	Italy/Serbia
Ford	Spain
Goodyear	Germany
Iveco (FIAT)	Spain
John Deere	USA
Renault	France
New Holland Tractor (FIAT)	Holland
Pagani Automobili	Italy
Porsche	Germany
Volkswagen	Germany/China

Biomechanical/Biomedical Industry

Biotec	Italy
Fatro SPA	Italy
Medison co.	Korea
Merit Medical Systems	USA
Neodent	Brazil
Steris Corporation	USA
Symrise	USA
Synthes	USA

Paper Industry/Publishing

Crane&Co	USA
Irving Tissue	USA
MPO	France
Rocktenn Preprint	Canada
SICPA	Brazil
Sofidel	Italy/France

Ceramic Industry

Cooperativa Ceramica di Imola	Italy
Euroceramique	Spain
Kajaria Ceramics	India
Pamesa Ceramica	Spain
Porcelanosa Group	USA
Sacmi	Italy/Mexico
Serenissima Ceramiche	Italy
Tecnografica	Italy

Chemical

Akzo Nobel	Italy
BASF	Spain
Dupont	USA
Firmenich	Switzerland
Grupo AC Marca	Spain
Infracor Gmbh	Germany
Wacker Chemie	Germany

Construction Industry

Aluplast	Italy
I.K.O.	Canada
Saint Gobain	USA
Wilo SE	Germany

Electrical/Electronic Industry

ABB	Estonia
Disano Illuminazione	Italy
Emerson Industrial Automation	Brazil
ETI	Slovenia
Johnson Controls	Germany
Kemet	Mexico
Moog	Italy
Rexroth Bosch Group	Germany/Russia
Siemens	USA/Germany/Mexico
Staubli	France
Tyco Electronics	Mexico

Energy Industry

Babcock & Wilcox	USA
BP British Petroleum	Great Britain
Conoco Phillips	USA
Dow-Kokam	USA
Duke Energy	USA
Nordex Energy Gmbh	Germany
Petrobras	Brazil
Schlumberger	Mexico

Pharmaceutical

Abbott	France
Amgen	USA
Bayer	Mexico
Cooper Vision	USA
Fresenius Kabi	Italy
GlaxoSmithKline	USA
Janssen Pharmaceutical	Belgium
Johnson & Johnson	USA
Roche	Italy

Hydraulic/Oledynamic/Pneumatic Industry

Dicsa	Spain
Festo Pneumatics	Mexico
Hawe Hydraulics	USA/China
HP Hydraulics	Italy
IMM Hydraulics	Italy/Great Britain
Mono Pumps	Great Britain
Sag/Sagom Tubi	Italy

Logistics/Transport Industry

AVTO LOGISTIKA	Russia
CSX Transportation	USA
DB Service Gmbh	Germany
Infrabel Railway	Belgium
Kuhne + Nagel	Spain/France
MTA Metro North Railroad	USA

Mechanical/Metallurgy

Bonfiglioli Riduttori	Italy
Comau	Italy/Romania
Fanuc Robotics	Italy
Fliegl	Germany
Honeywell Garrett	Italy/Romania
IMA Industries	Italy
KBA Konig&Bauer	Germany
Marchesini Group	Italy
Otis	Italy
Rodo-ketten	Germany
Su-matic	Italy
Thyssenkrupp	Brazil/China
Vesuvius	Germany

Plastic Industry

Lavel Gomma	Italy
Schwartz Gmbh	Germany
Trelleborg	Great Britain/China
Vision Extrusion	Canada

Administrative/Public/Army

A.O.U. Ospedali Riuniti Di Trieste	Italy
GOZ Obukhov State Plant	Russia
Guardia di Finanza	Italy
National Institutes of STDS	USA
NHS National Services Scotland	Great Britain
US Army / Airforce / Navy	USA

Textile Industry/Clothing Industry

Cotton Republic	Mexico
Giorgio Armani Operations	Italy
Jeans Knit PVT Ltd	India
Max Mara Group	Italy
Valentino	Italy



0315 bscaduit

Modula is present in 5 continents with dealers and branches located in over 30 countries.

MODULA HEADQUARTERS
Via San Lorenzo, 41 - 42013
Salvaterra di Casalgrande (Re) ITALY
Tel. +39 0522 774111
Fax +39 0522 774175
info@modula.eu
www.modula.eu

Modula is part of



All information provided on this catalogue is for informative purposes only and is not binding. Modula reserves the right to change information on this catalogue at any time. Modula will not accept liability for or guarantee the accuracy of the information contained herein.